

3D Galax Theme (InterrobangPie/DubMood Remix)

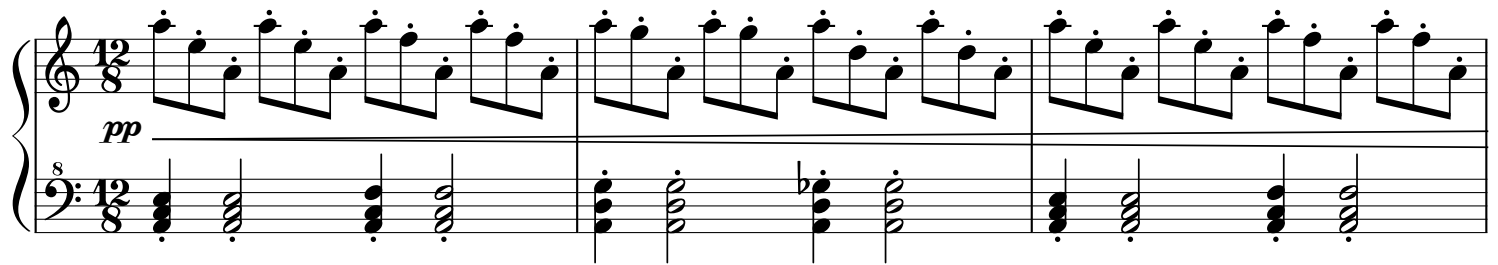
"Retranscribed" off Interrobang Pie's Chiptune Source
(Simplified Version)

ZdrytchX


sites.google.com/site/zdrytchx

♩ = 128.57

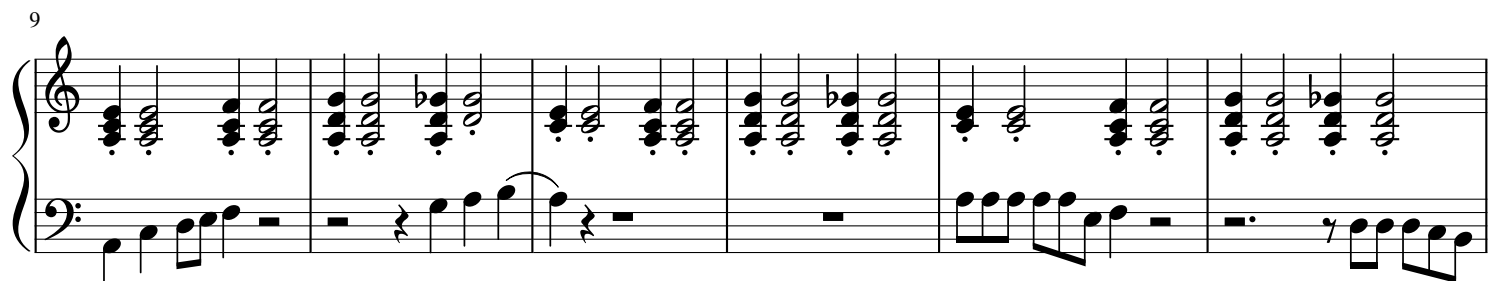
pp



4



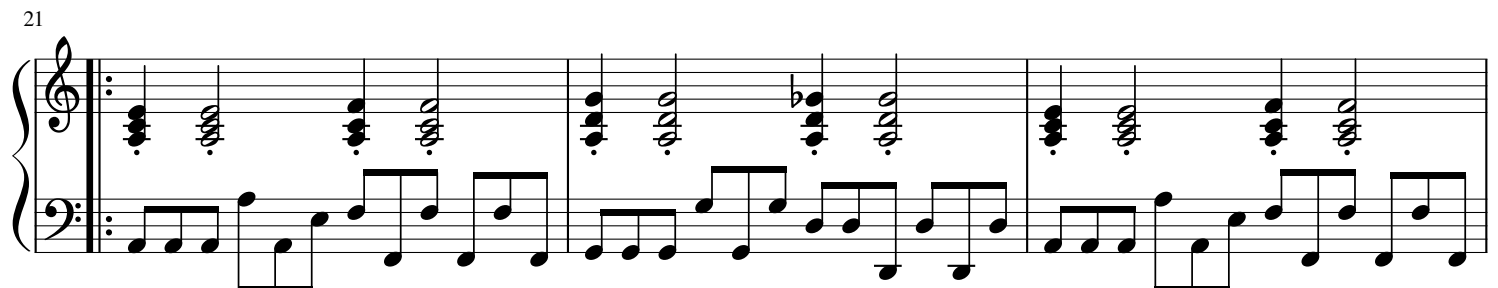
9



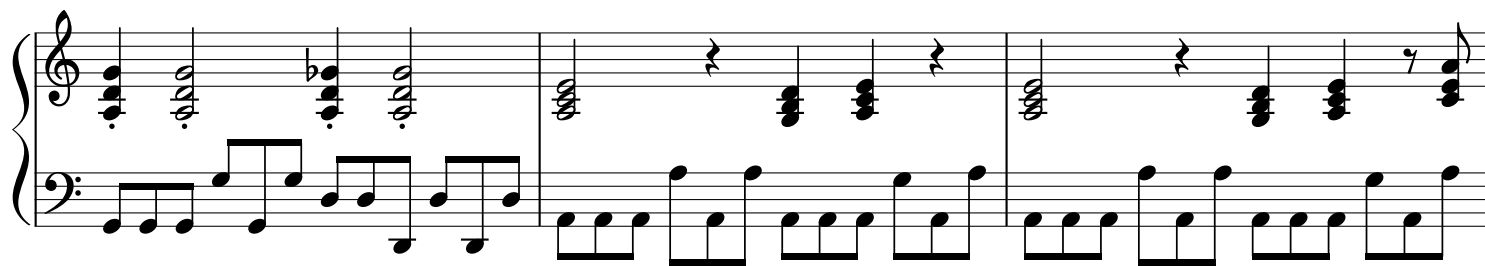
15



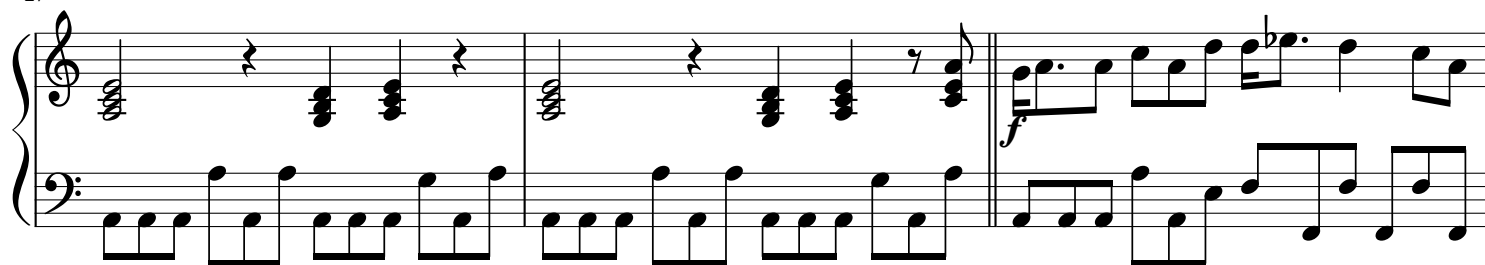
21



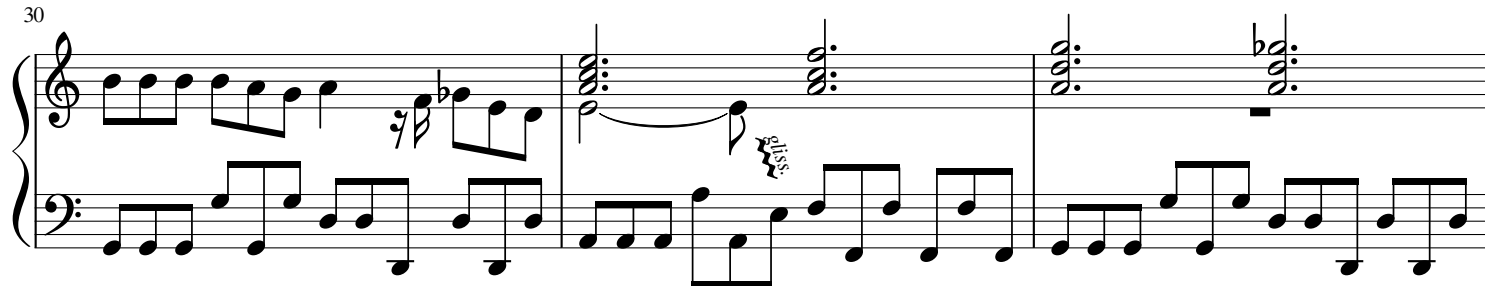
24



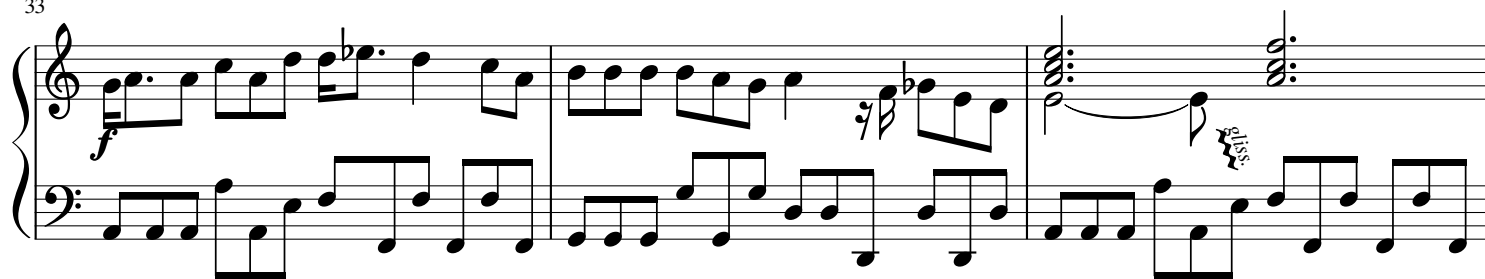
27



30



33



36



39

System 1, measures 39-41. The treble clef contains chords and a melodic line starting in measure 40. The bass clef contains a continuous eighth-note accompaniment.

42

System 2, measures 42-44. The treble clef continues with chords and a melodic line. The bass clef continues with the eighth-note accompaniment.

System 3, measures 45-47. Measure 45 begins with a forte (*f*) dynamic. The treble clef features a melodic line with a repeat sign in measure 47. The bass clef continues with the eighth-note accompaniment.

45

System 4, measures 48-50. Measure 48 begins with a forte (*f*) dynamic. The treble clef features a melodic line with a repeat sign in measure 50. The bass clef continues with the eighth-note accompaniment.

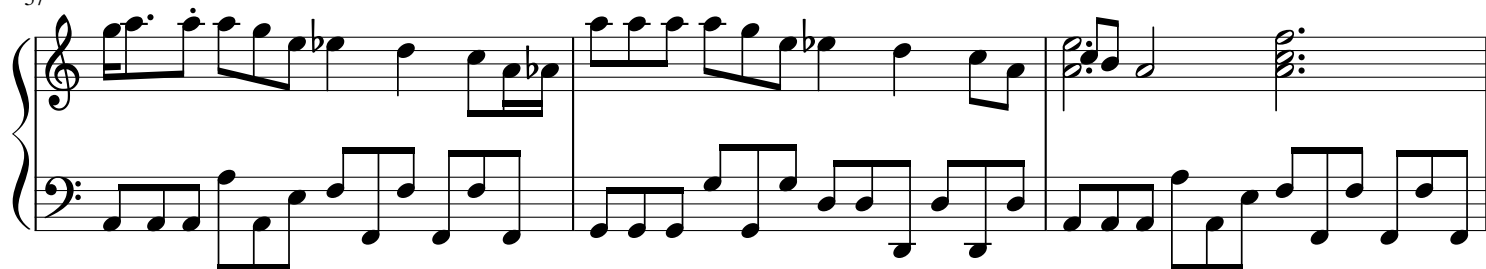
51

System 5, measures 51-53. The treble clef features a melodic line. The bass clef continues with the eighth-note accompaniment.

54



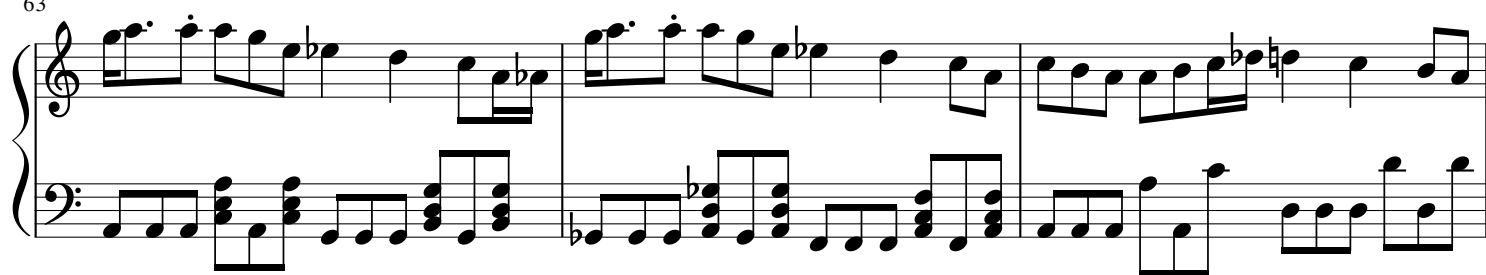
57



60



63



66



69

Measures 69-71 of a piano piece. The right hand features a melodic line with eighth and sixteenth notes, including a trill in measure 70. The left hand provides a steady accompaniment of eighth notes.

72

Measures 72-74. Measure 72 continues the previous texture. Measures 73 and 74 feature a dense, block-like texture in the right hand with many beamed notes, while the left hand plays a simple eighth-note accompaniment.

75

Measures 75-77. Measure 75 has a dense right hand texture. Measures 76 and 77 feature a series of chords in the right hand with dynamic markings: *mf*, *mp*, *mf*, *f*, *mf*, *mp*, *mf*. The left hand has a few notes in measure 75 and rests in 76 and 77.

78

Measures 78-79. Measure 78 has a series of chords in the right hand with dynamic markings: *f*, *mf*, *mp*, *mf*, *f*, *mf*, *mp*, *mf*. The left hand has a steady eighth-note accompaniment. Measure 79 features a melodic line in the right hand and a chordal accompaniment in the left hand.

80

Measures 80-82. Measure 80 has a melodic line in the right hand and a chordal accompaniment in the left hand. Measures 81 and 82 feature a series of chords in the right hand, with the final chord in measure 82 being a whole note chord.

